

GEORGE NAMA

WORKS 1958 – 1978

June 21st through August 26th 2016

Exhibition organized by
Robert Kashey, David Wojciechowski

Catalog by Stephanie Hackett

SHEPHERD
W & K
GALLERIES

58 East 79th Street
New York, N. Y. 10075

Tel: 1 212 861 4050
Fax: 1 212 772 1314
ShepherdNY@aol.com
www.shepherdgallery.com

CATALOG

Front cover illustration: Lithograph. 1973. 26" x 20 ¾" (66 x 52.7 cm), signed and dated

COLLAGES:

1-10. Mixed media on paper. 1958-1959. 5 ¼" x 8" (13.3 x 20.3 cm), signed and dated

DRAWINGS:

Great Falls, Virginia

11-15. Sumi ink and bamboo pen, charcoal and gouache on paper, with irregular edges, 1960-1961.

36" x 48" (91.4 x 122 cm), signed and dated

PRINTS AND DRAWINGS:

Montauk Series

16. Artist's proof from an edition of 10. 1976. Collagraph and serigraph on Arches cover stock.

Each panel: 40" x 26 1/2" (102 x 67.3 cm). Triptych, overall size: 40" x 79.5" (102 x 202 cm), signed and dated

17. Artist's proof from an edition of 10. 1978. Collagraph and serigraph on Arches cover stock.

Each panel: 40" x 26 1/2" (102 x 67.3 cm). Polyptych, overall size: 40" x 106" (102 x 269 cm), signed and dated

18. Artist's proof from an edition of 10. 1977. Collagraph and serigraph on Arches cover stock.

Each panel: 40" x 26 1/2" (102 x 67.3 cm). Triptych, overall: 40" x 79.5" (102 x 202 cm), signed and dated

19-28. Watercolor, ink, and gouache on Kitakata paper. 1971-1978. 21" x 17 ½" (53.3 x 44.5 cm), signed and dated

Back cover illustration: Collage, mixed media on paper. 1961. 11 7/8" x 17 1/2" (30.2 x 44.5 cm), signed and dated

© Copyright: Robert J. F. Kashey
for Shepherd Gallery, Associates, 2016

GRAPHIC DESIGN: Keith Stout

PHOTOGRAPHY: Hisao Oka

TECHNICAL NOTES: All measurements are in inches and in centimeters; height precedes width.
All drawings and paintings are framed. Prices on request. All works subject to prior sale.

GEORGE NAMA WORKS 1958 – 1978

Fifteen years ago, we undertook a program of exhibiting the works of George Nama. The first exhibitions were dedicated to his collaborations with the poets Alfred Brendel, Yves Bonnefoy, and Charles Simic. During studio visits, we became aware of the complex scope and range of Nama's oeuvre. All his paintings, drawings, prints, and sculptures are works that manipulate natural forms into abstractions.

The current exhibition begins with a series of never before exhibited collages from 1958-1959 and large-scale landscape drawings of 1960-1961, executed in Great Falls, Virginia. During the 1970s, he created ten-foot long, colorful prints of tubular forms. The exhibition concludes with playful watercolors of geometric organic structures as well as human figures in motion.

There is a constant shifting between what is abstracted from nature and what is realistically observed. This is not arbitrary. It is Nama's world.

RK/DW

COLLAGES
1958 – 1959

The artist's goal was to achieve monumentality in a small format.

These collages were Nama's first group of related works as a comprehensive study of texture, form, color, and space.



1



2



3



4



5



6



7



8



9



10

DRAWINGS
1960 – 1961
Great Falls, Virginia

In these works, the artist sought to capture constant energy in actual space, reflecting the monumentality that confronts him.

These works were achieved in rapid execution. The swift movements of ink wash and brushwork enabled Nama to get inside the subjects.





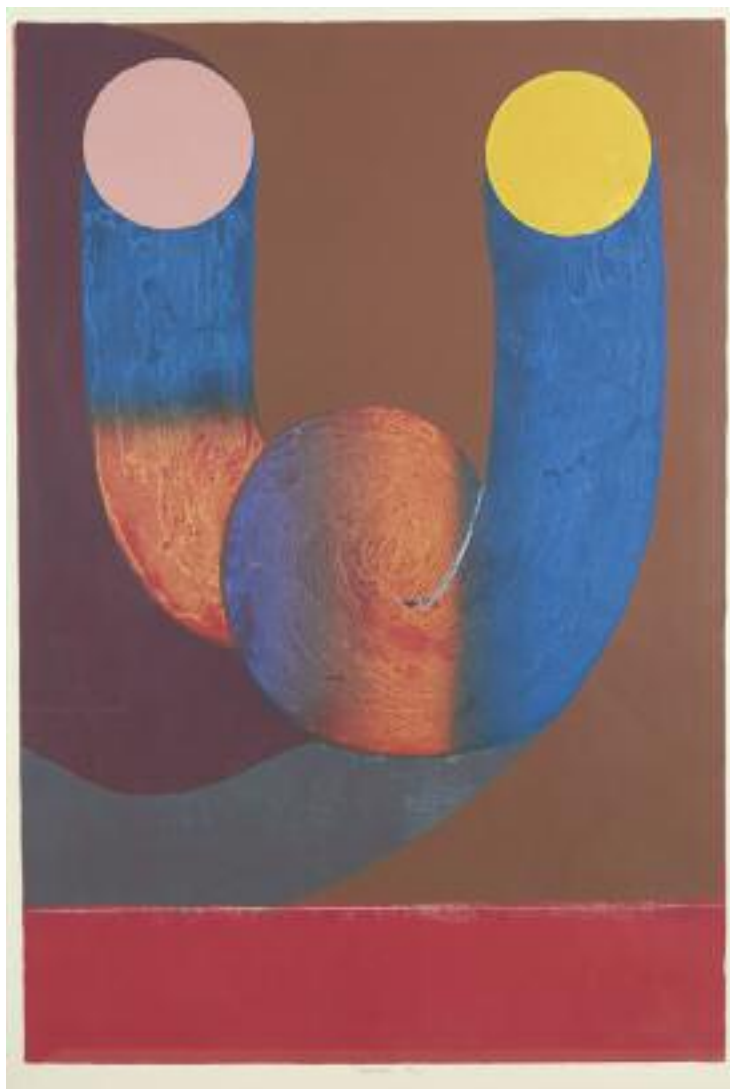


PRINTS AND DRAWINGS
1971 – 1978

Energy is the theme of this series, which reflects the strength of natural forces, the vastness of the ocean, sky, cliffs, and wind at Montauk.

The twisted forms and high color also suggest man-made force, recalling the steel mills at the artist's hometown of Pittsburgh.



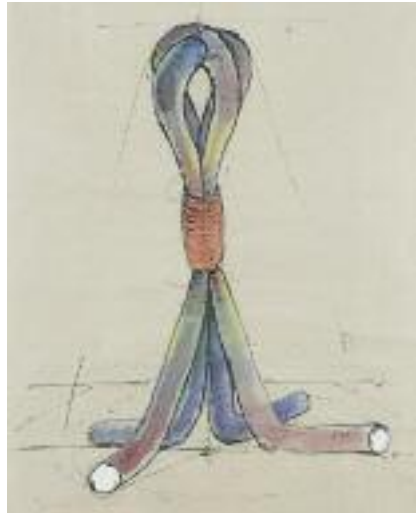




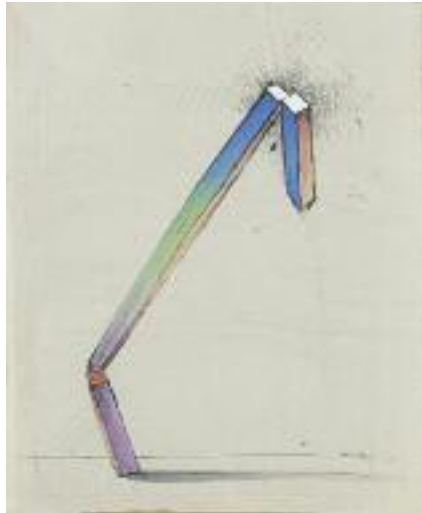
18



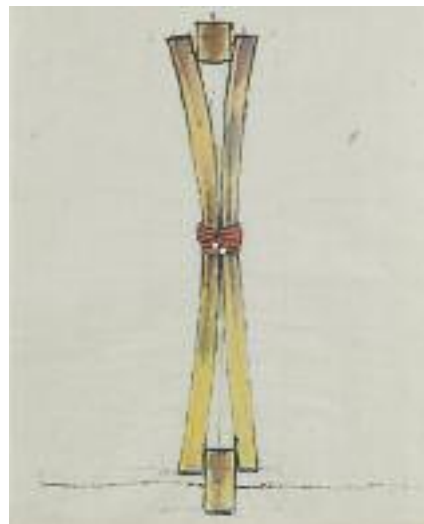
19



20



21



22



23



24



25



26



27



28

SELECTED ONE MAN EXHIBITIONS

2016 Shepherd W&K Galleries, New York, New York
2015 Maestro Arts, London, England
2013 Shepherd W&K Galleries, New York, New York
2011 Shepherd & Derom Galleries, New York, New York
2010 Boston Athenaeum, Boston, Massachusetts
2009 Galerie Claude Van Loock, Brussels, Belgium
2008 Galerie Chantal Grange, Paris, France
2008 Galerie Arnoldi-Livie, Munich, Germany
2008 Schleswig Holstein Music Festival at St. Petri, Lubeck, Germany
2008 Shepherd & Derom Galleries, New York, New York
2007 Galerie Arnoldi-Livie, Munich, Germany
2007 Jack Rutberg Fine Arts, Inc. Los Angeles, California
2006 Galerie Patrick Derom, Brussels, Belgium
2006 Galerie Arnoldi-Livie, Munich, Germany
2006 Shepherd & Derom Galleries, New York, New York
2005 “Yves Bonnefoy: poesie et peinture 1993-2005”,Tours, France
2004 Jack Rutberg Fine Arts, Inc. Los Angeles, California
2003 Galerie Arts et Lettres, Vevey, Switzerland
2003 Shepherd & Derom Galleries, New York, New York
2003 Galerie Artemisia, Paris, France
2003 Galerie Patrick Derom, Brussels, Belgium
2002 Jack Rutberg Fine Arts, Inc., Los Angeles, California
2001 University of New Haven, New Haven, Connecticut
2001 Shepherd & Derom Galleries, New York, New York
1983 “Landscapes: Work of the Early Sixties”, Zenith Gallery, Pittsburgh, Pennsylvania
1975 Diogenes International Galleries, Athens, Greece
1974 Tibor de Nagy Gallery, New York, New York
1970 The Westmoreland Museum of American Art, Greensburg, Pennsylvania
1969 Associated American Artists Gallery, New York, New York
1967 Galerie d’art, Brussels, Belgium
1965 Print Club, Philadelphia, Pennsylvania
1965 Agra Gallery, Washington, D.C.
1964 University of Virginia, Charlottesville, Virginia
1963 Carnegie Museum of Art, Pittsburgh, Pennsylvania

SELECTED COLLECTIONS

Bibliothèque municipale de Tours, Tours, France
Bibliothèque nationale de France, Paris, France
Bodleian Library, Oxford, England
Boston Athenaeum, Boston, Massachusetts
Boston Public Library, Boston, Massachusetts
British Library, London, England

Brooklyn Museum, Brooklyn, New York, New York
The Butler Institute of American Art, Youngstown, Ohio
Carnegie Museum of Art, Pittsburgh, Pennsylvania
Herzog August Bibliothek, Wollfenbüttel, Germany
Library of Congress, Washington, D.C.
Los Angeles County Museum of Art, Los Angeles, California
The Metropolitan Museum of Art, New York, New York
The Morgan Library and Museum, New York, New York
Musée Jenisch, Vevey, Switzerland
National Academy Museum, New York, New York
Philadelphia Museum of Art, Philadelphia, Pennsylvania
Smithsonian American Art Museum, Washington, D.C.
University of Virginia, Charlottesville, Virginia
The Westmoreland Museum of American Art, Greensburg, Pennsylvania
Yale University Art Gallery, New Haven, Connecticut

SELECTED AWARDS

2016 American Academy of Arts and Letters, New York, New York,
Purchase Awards
2007 Exhibition of Contemporary American Art, National Academy Museum,
New York, New York,
Richard H. Recchia Memorial Award
1986 National Academy of Design, New York, New York, Ralph Fabri Prize,
162nd Annual Exhibition
1983 National Academy of Design, New York, New York, Cannon Prize,
158th Annual Exhibition
1981 Elected Member, National Academy of Design, New York, New York
1971 American Color Print Society, Philadelphia, Pennsylvania, The Stella
Drabkin Memorial Award
1968 Print Club, Philadelphia, Pennsylvania, The Stuart M. Egnal Prize,
Philadelphia Museum of Art, purchase
1968 American Color Print Society, Philadelphia, Pennsylvania, The Francesca
Wood Award
1967 Museum of Fine Arts, Boston, Massachusetts, The David Berger
Memorial Prize
1966 Heinz Fellow, Atelier 17, William S. Hayter, Paris, France
1965 Pennsylvania Academy of Fine Arts, Philadelphia, Pennsylvania
The Alice McFadden Eyre Medal
1964 Philadelphia Art Alliance, Philadelphia, Pennsylvania, M.W.Zimmerman
Memorial Award
1963 Pennsylvania Academy of Fine Arts, Philadelphia, Pennsylvania,
Watercolor Club Award
1963 The Butler Institute of American Art, Youngstown, Ohio, Watercolor
Purchase Award